

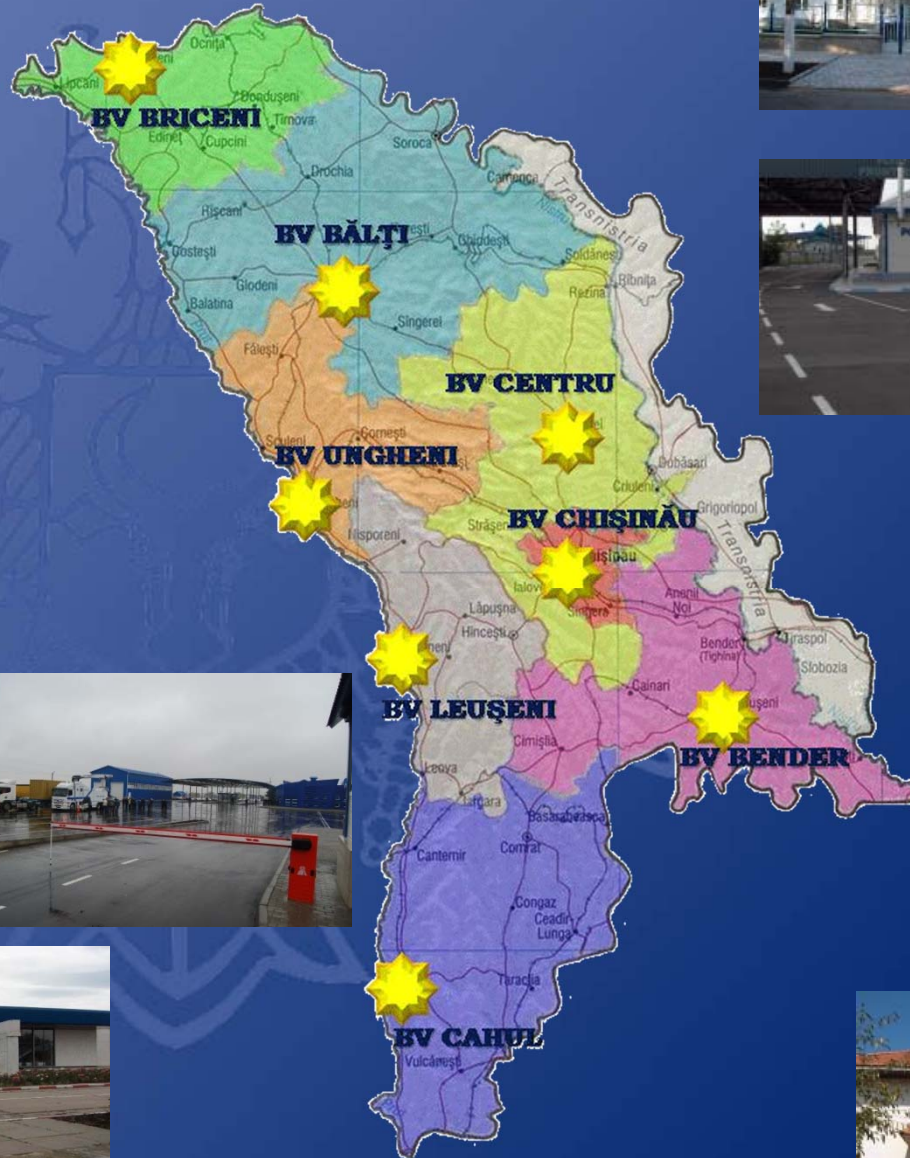


Customs Service of the Republic of Moldova

Republic of Moldova
MD-2001, r. Chisinau, Kolumna Str. 30,
Tel./fax: (+ 373 22) 273061
www.customs.gov.md

Structure

- Headquarters
- 7 Customs
- 101 Customs Posts
- 1 896 Employees



Trade and Transport Facilitation



Reforms

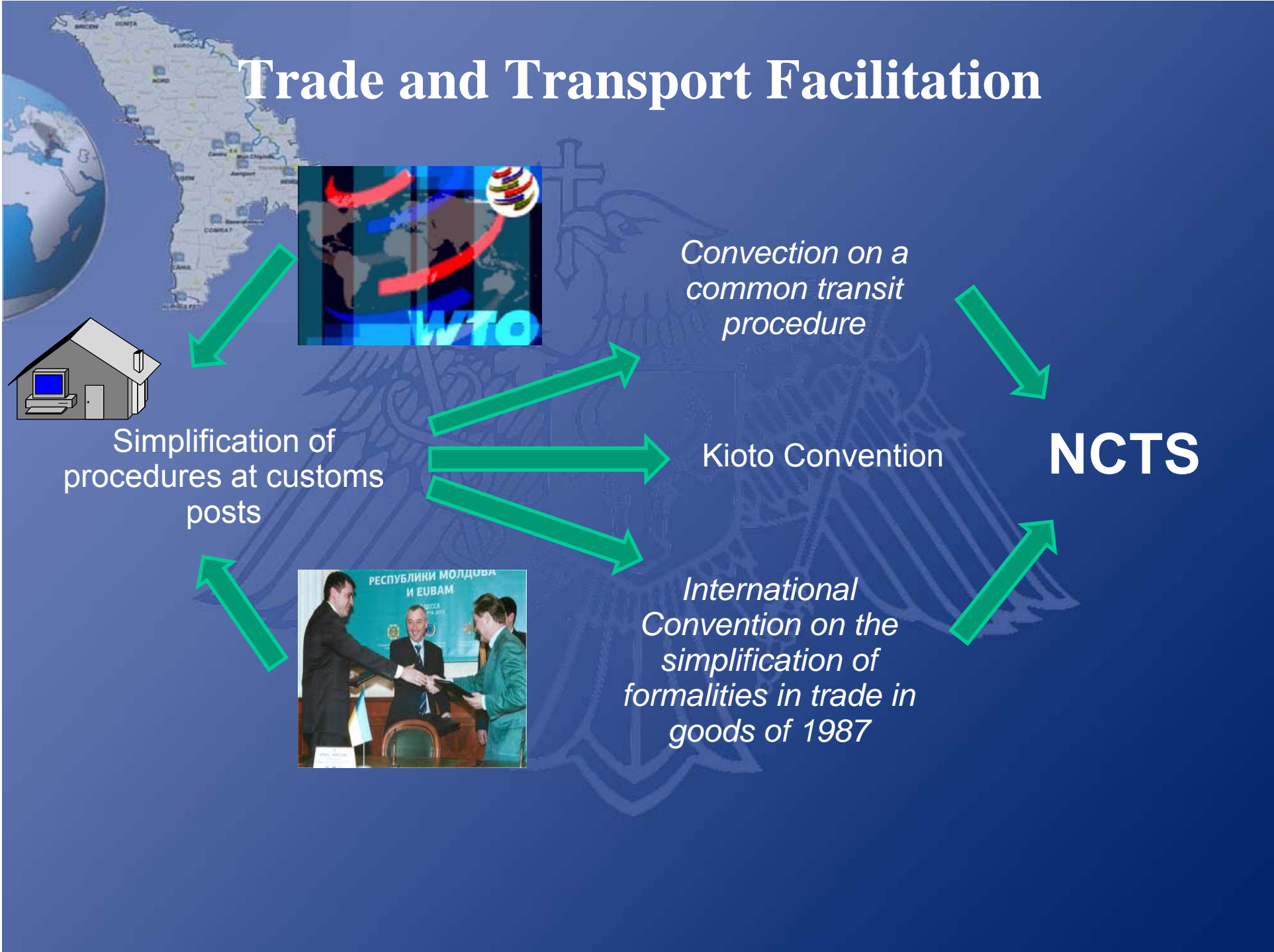


Simplification of
procedures at customs
posts

Improvement of
international trade

Approximation of
legislation to
international
standards

Trade and Transport Facilitation





NCTS



Security and optimization of commercial chains

Risk management and prevention of fraud in customs

Electronic Submission of Customs Declaration

Customs modernization





Customs clearance features

Border crossing \approx 30 minutes

Risk Analysis

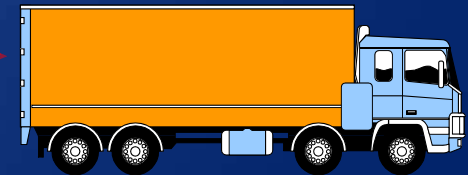
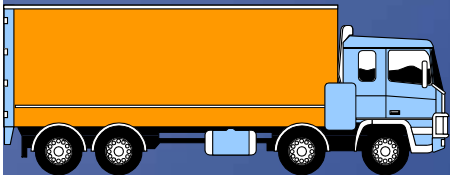
Database optimisation

Customs Post Clearance Audit

2011 - 47%

Red corridor

2012 - 31%





Priorities of customs services

- Introduction of simplified customs procedures and customs control optimization;
- Improvement of risk analysis system;
- Development of customs facilities;
- Cooperation with Customs of other countries;
- Application of intellectual property rights protection measures;
- Professional capacity development

Thank you for your attention



Octavian Maimas

**Customs Service of the Republic of Moldova,
Control and Customs Destinations Division**

Tel./fax: (+ 373) 22 574 191

E-mail: octavian.maimas@customs.gov.md